

**PANTUM**

# **PRINT BRIGHT IDEAS WITH BRILLIANT MACHINES**

---

COLOR LASER MULTIFUNCTION PRINTER



**CM8000FDN**

High Speed: **57 PPM** (A4)

[WWW.PANTUM.COM](http://WWW.PANTUM.COM)

1

## PRODUCT FEATURE

**CM8000FDN**, a high-end multifunction color printer, is very suitable for government, medium and large enterprises, finance industry, etc. Enjoy satisfying printing work with high-quality color outputs, high configuration and easy interaction.



HIGH QUALITY

### PROFESSIONAL COLOR

- Accurate color: PANTONE color correction and embedded color samples; color replacement technology is combined with spot color replacement and RGB replacement for precise matching of key colors
- Ultra-sharp 4800 CQ color quality



HIGH PERFORMANCE

### POWERFUL OUTPUT

- Ultra-high print speed up to 57ppm(A4) / 60ppm(letter) and print the first color page within 6.5s
- Enhanced printing capabilities: 1.6 GHz quad-core processor and standard 2.0 GB memory; powerful print controller that can handle complex color jobs of large and high-resolution photos and graphics
- Advanced scanning functions:
  - Fast scan: single-pass duplex scanning at speeds up to 114 ppm in duplex mode and 57 ppm in simplex mode (A4)
  - High scan quality: 1,200 dpi CCD-based scan quality for color and information accuracy
  - Special functions like automatic size detection, multifeed detection, mixed originals scanning at full speed, paper jam recovery, etc.



HIGH CONFIGURATION:

### FLEXIBLE OPTIONS

- Extraordinary paper handling: support multiple media types and sizes and offer selectable staple/punch output options
- Input paper capacity: standard 650 pages and up to 4,500 pages with optional trays
- Output paper capacity: standard 500 pages and up to 1,950 pages with optional trays



HIGH CAPACITY:

### LONG-TERM USE

- 3 optional consumable capacity: 8,000, 33,000 and 55,000 pages (black)/8,000, 22,000 and 55,000 pages (color)
- Long-life unit: 300,000-page LSU, 175,000-page drum and 115,000-page recycle bin
- Durable and robust: maximum monthly duty cycle of 350,000 pages to satisfy users with high printing volume

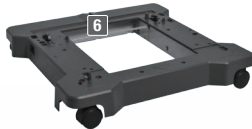


EASY INTERACTION:

### INTUITIVE CONTROL PANEL

- 10-inch (25 cm) color touch screen: provide multi-touch functionality with pinch, zoom and flick gestures using smart touch technology





■ Standard

■ Optional

■ Consumable

- **1. 10-inch (25 cm) color touch screen**
- **2. 100-page multipurpose tray**
- **3. 550-page tray**

■ **4. CPT-801: 550-page tray**

4.7" \* 22.0" \* 20.6 inches  
120 \* 559 \* 522 mm

■ **5. CPT-801H: 2,200-page tray**

14.1" \* 22.0" \* 20.6 inches  
359 \* 559 \* 522 mm

■ **6. CPC-801: caster base**

4.3" \* 26.1" \* 25.9 inches  
108.5 \* 662 \* 658 mm

■ **7. CPF-802: staple finisher**

6.3" \* 21.4" \* 18.7 inches  
159 \* 544 \* 475 mm

■ **8. CPF-803: multi-position staple punch finisher (S-HV)**

45.5" \* 24.4" \* 22.6 inches  
1156 \* 621 \* 574 mm

■ **9. CPF-804: multi-position staple punch finisher (HV Tall)**

50.2" \* 24.4" \* 22.6 inches  
1276 \* 621 \* 574 mm

■ **10. Commercial toner cartridges**

- ① CTL-8000K/C/M/Y: 8,000 pages
- ② CTL-8000HK: 33,000 pages;
- CTL-8000HC/HM/HY: 22,000 pages
- ③ CTL-8000XK/XC/XM/XY: 55,000 pages

■ **11. Commercial LSU**

COO-8000K/C/M/Y: 300,000 pages

■ **12. Commercial drum unit**

- CDO-8000K: 175,000 pages
- CDO-8000CMY: 175,000 pages

# KEY SPECIFICATIONS

Color Laser Multifunction Printer

Model  
Type  
Function

**CM800FDN**  
Color Laser Multifunction Printer  
Print / Copy / Scan / Fax

Printing	
Printing speed	A4: 57 ppm; Letter: 60 ppm
Duplex printing speed	A4: 57 ppm; Letter: 60 ppm
First page	6.5s
Max. monthly duty cycle	350,000 pages
Recommended monthly printing volume	5,000 – 50,000 pages
Resolution	1,200*1,200 dpi, 4,800 Image Q (2,400*600 dpi)
Printing language	PCL 5e Emulation, PCL 6 Emulation, Microsoft XPS (XML Paper Specification), Personal Printer Data Stream (PPDS), PostScript 3 Emulation, PDF 1.7 Emulation, Direct Image, AirPrint
Processor	Quad Core 1.6 GHz
Memory	Standard: 2,048 MB, Max.: 4,096 MB
Hard disk	Included in Configuration
Touch screen	10 inch (25 cm)
Double-side printing	Support
USB printing	Support
Network printing	Support
Wireless	Not Support
Copy	
Copy speed	A4: 57 ppm; Letter: 60 ppm
First page	Mono: 6s; Color: 7s
Reduce / Enlarge range	25 - 400 %
Scan	
Type	Flatbed + ADF
Technology	CCD
Out-feed type	DADF
ADF volume	150 pages
Scan speed	A4: 57 ppm; Letter: 60 ppm
Double-side scan speed	A4: 114 ppm; Letter: 120 ppm
Scan area	Max. 216*355 mm
Hardware scanning resolution	1,200*600 ppi
Scanning file type	XPS, TIFF, PDF (A-1a, A-1b), PDF, JPEG, JPG
Scanning output	E-mail, USB or Network Computer, USB disk, FTP
Fax	
Modem speed	ITU T.30, V.34 Half-Duplex, 33.6 Kbps
Fax speed	Less than 3s/page
Paper Handling	
Paper input volume	Standard: 550 pages; Multipurpose Feeder: 100 pages
Input volume	Standard: 550 pages + 100 pages; Max.: 4,500 pages
Output volume	Standard: 500 pages; Max.: 1,950 pages
Support media	Plain Paper, Card Stock, Recycled Paper, Glossy Paper, Heavyweight Glossy Paper, Labels, Vinyl Labels, Copperplate Paper, Envelopes, Rough Envelopes, Transparencies, Letterheads, Preprinted Paper, Colored Paper, Lightweight Paper, Heavyweight Paper, Rough Cotton Paper (For more information please refer to the user guide)
Support media type	3 x 5, 4 x 6, A4, A5, A6, Executive, Folio, JIS-B5, Legal, Letter, Oficio, Statement, Universal, 7 3/4 Envelope, 9 Envelope, 10 Envelope, B5 Envelope, C4 Envelope, C5 Envelope, DL Envelope, other Envelope (For more information please refer to the user guide)
Paper weight range supported	Standard: 60 - 176g/m <sup>2</sup>
Optional paper handling	CPT-801: 550-Page Tray; CPT-801H: 2,200-Page Tray; CPF-802: Staple Finisher; CPF-803: Multi-Position Staple Punch Finisher (S-HV); CPF-804: Multi-Position; Staple Punch Finisher (HV Tall); CPC-801: Caster Base
General	
Package dimension (WxDxH)	700*760*1114 mm
Gross weight (kg)	96.36 kg
Device dimension (WxDxH)	559*588*813 mm (Standard)
Net weight (kg)	83.2 kg
Environment	Temperature: 10 - 32°C; Humidity: 15 - 80% RH; Altitude: 0 - 2,896 m
Noise	Single-Side Printing: 56 dBA; Double-Side Printing: 57 dBA; Copy: 59 dBA; Scan: 55 dBA; Ready: 14 dBA
Power consumption	Print: 870 w; Copy: 650 w; Scan: 115 w; Ready: 125 w; Standby: 1.46 w; Sleep: 0.3 w
Energy star	TEC: 0.92 Kilowatt-hours per Week
Power	220-240VAC, 5.1A, 50/60 Hz
Windows OS	Windows 11/Windows 10/Windows 8.1/Windows 8.0/Windows Server 2016/Windows Server 2012 R2/Windows Server 2012/Windows Server 2008 R2/Windows Server 2008/Windows 7/Windows Vista
Mac OS	Mac Print Driver: Mac OS X 10.7-10.15, 12.3; AirPrint: Mac OS X 10.7-10.16, 12.3
Linux OS	Ubuntu 14.04/16.04/18.04/20.04/21.10
Interface	2 x Rear USB 2.0 High Speed (A); 2 x Front USB 2.0 High Speed (A); USB 2.0 High Speed (B); Ethernet (10/100/1000); Card Slot
General	
Cartridge type	Separate
Starter cartridge	CTL-8001K: 8,000 pages; CTL-8001C/M/Y: 17,000 pages
Starter LSU	COO-8000K/C/M/Y: 300,000 pages
Starter drum	CDO-8000K: 175,000 pages; CDO-8000C/M/Y: 175,000 pages
Starter recycle bin	CWT-8000: 115,000 pages
Commercial cartridge	©CTL-8000K/C/M/Y: 8,000 pages; ©CTL-8000HK: 33,000 pages / CTL-8000K/H/M/Y/HY: 22,000 pages; ©CTL-8000K/XC/XM/XY: 55,000 pages
Commercial LSU	COO-8000K/C/M/Y: 300,000 pages
Commercial drum	CDO-8000K: 175,000 pages; CDO-8000C/M/Y: 175,000 pages
Recycle bin	CWT-8000: 115,000 pages

Legal disclaimer:

(1) AirPrint is a trademark of Apple Inc., registered in the U.S. and other countries.

(2) Drum unit lifetime is based on 3 average letter/A4 size pages per print job and 5% coverage.

(3) Actual print volume may vary based on other factors such as paper size and feed density, toner coverage, job source, percentage of black/only printing, and average print job complexity.

Notes:

(1) The user cartridge capacity is the average print volume of 4 during continuous printing at the single-sided mode, based on the ISO/IEC 19798 standard.